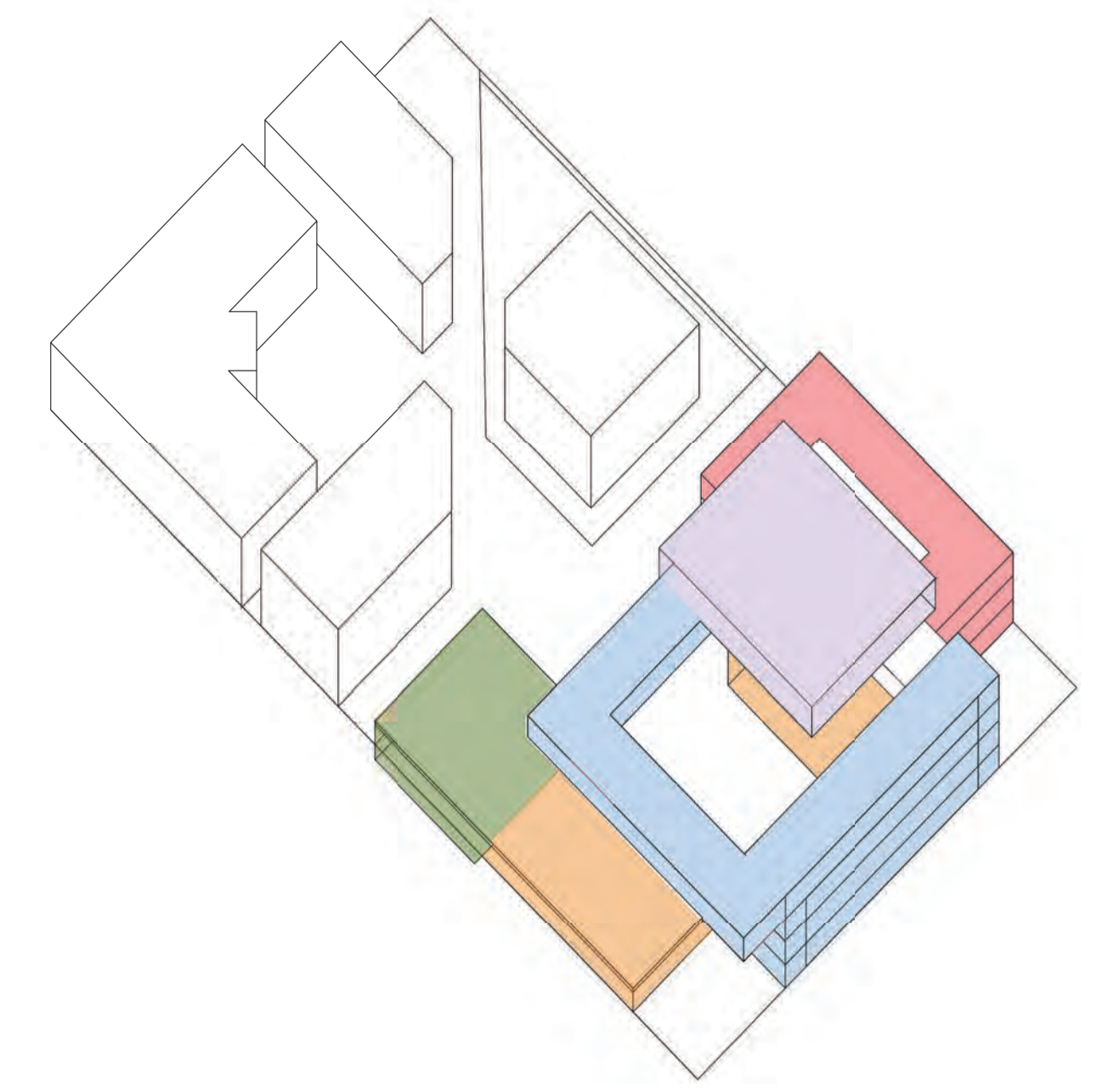


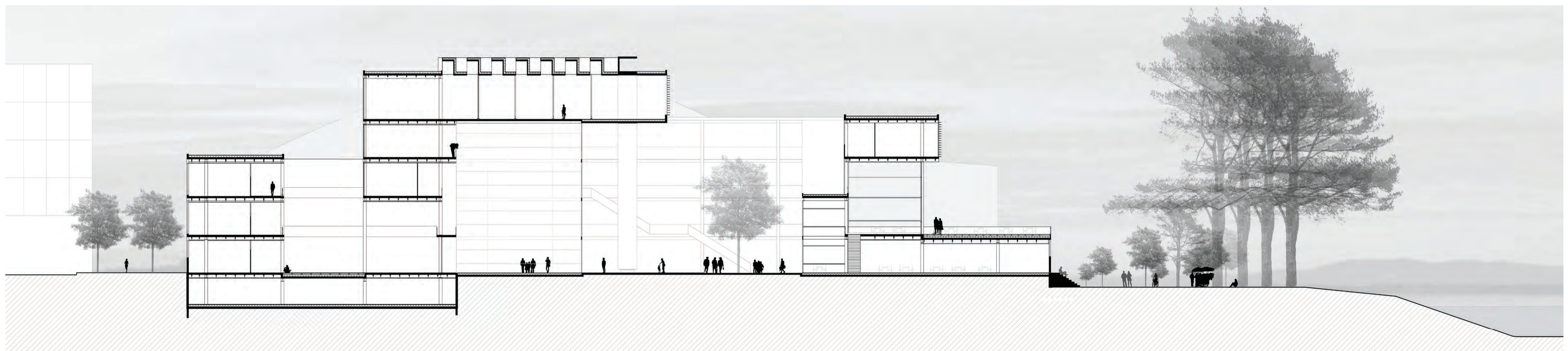
ENTRE LAC ET MONTAGNE



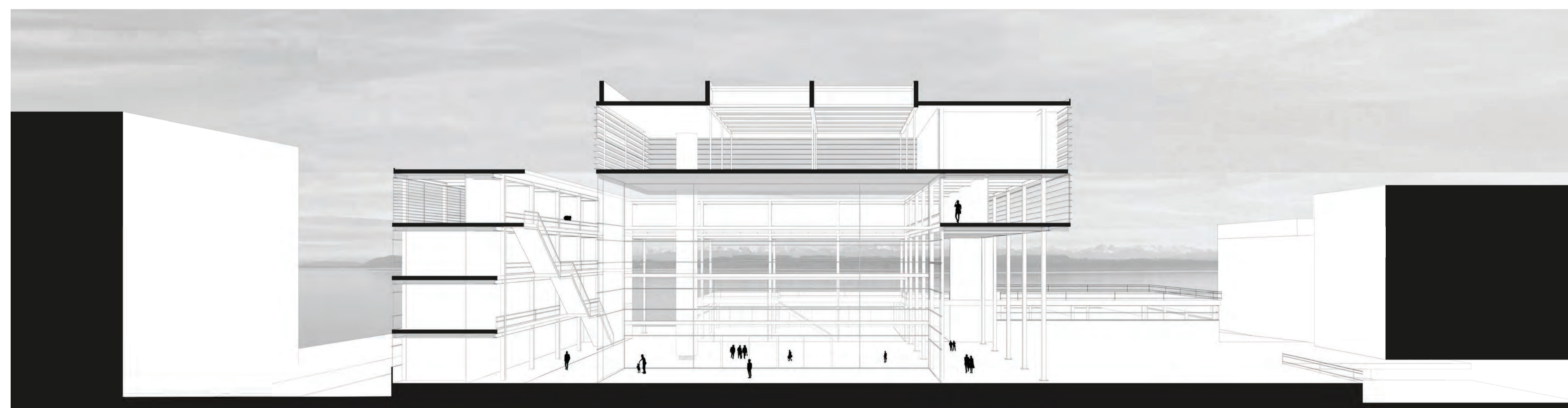
- Auditorioires (1000 m²)
- Espace public (955 m²)
- Bureaux (1723 m²)
- Enseignement (1660 m²)

Plan RDC
1/500e

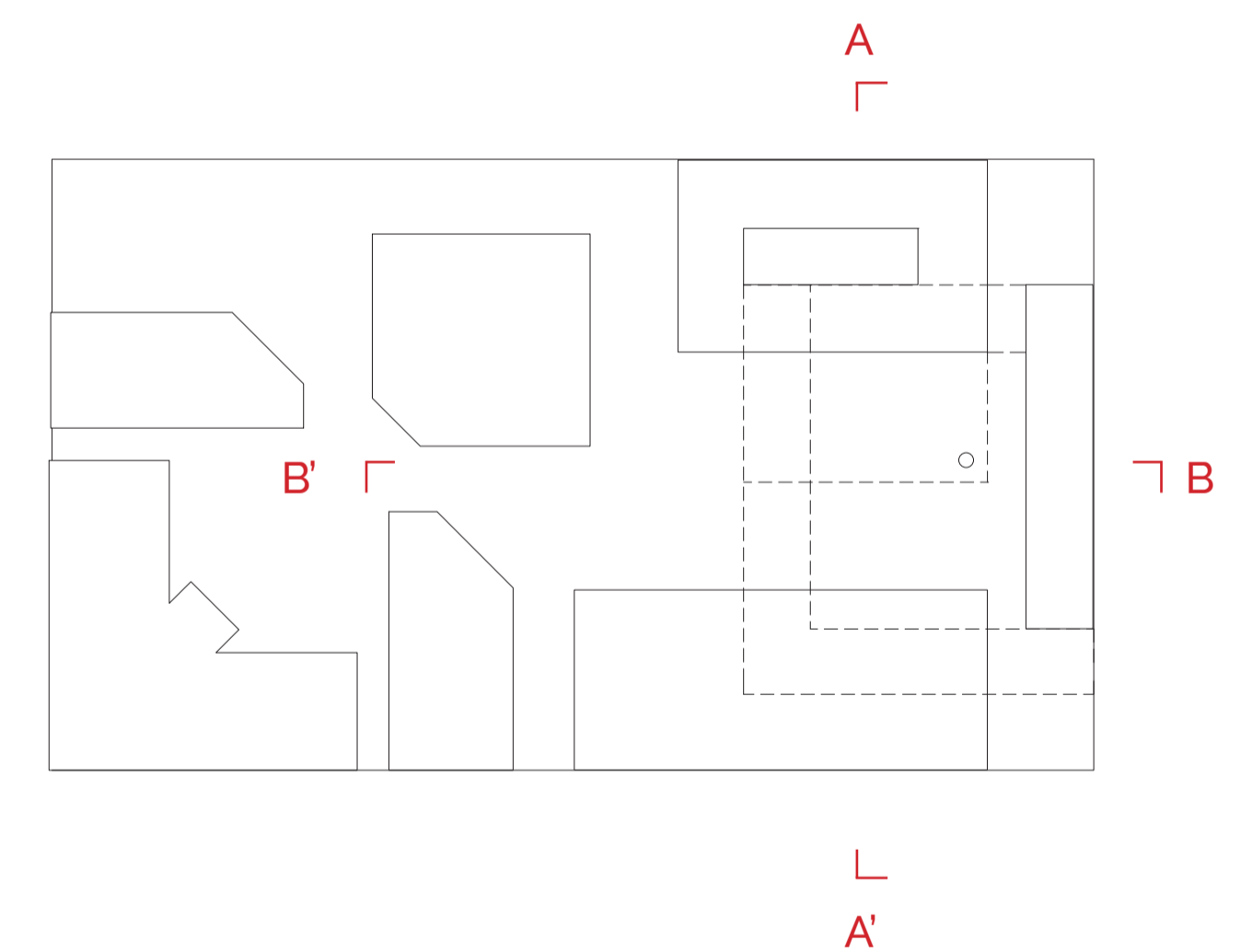
0 10 50 m



Coupe longitudinale AA'
1/200e



Coupe Transversale BB'
1/200e



0 5 20 m

